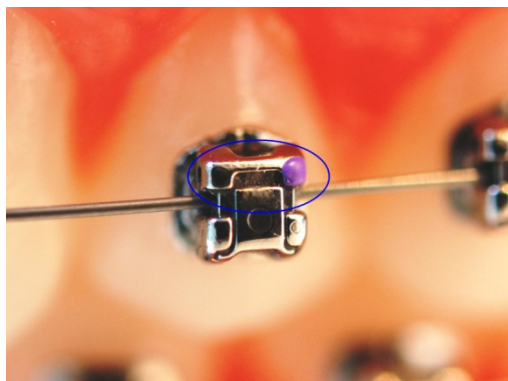
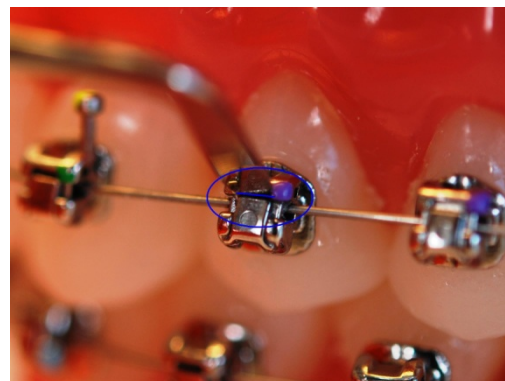




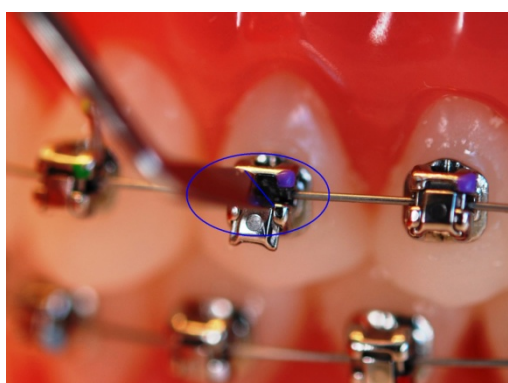
Hvordan åpnes reguleringen & fjernes buen



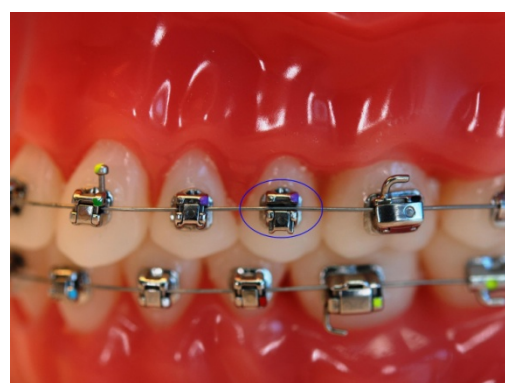
1. Lukket bracket



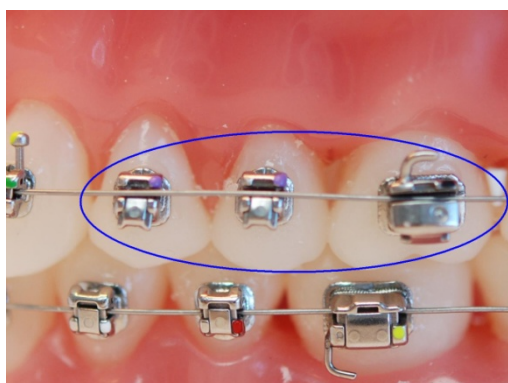
2. Sett en carver inn i fordyptningen



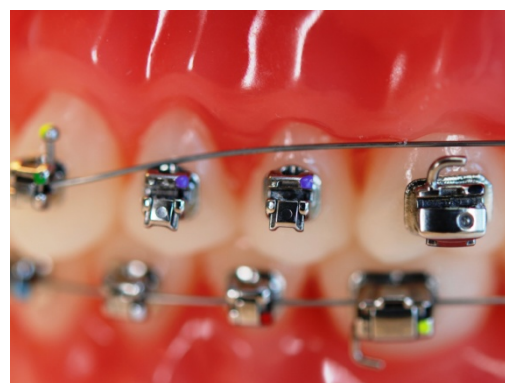
3. Snu den 90 grader



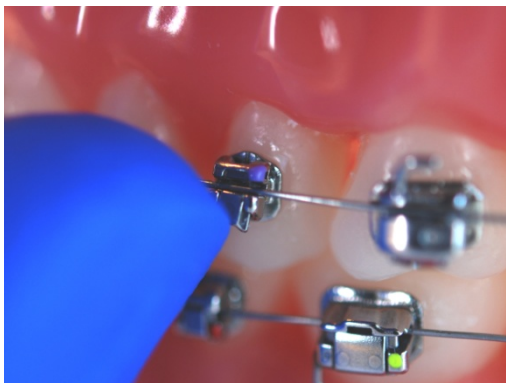
4. Åpen bracket



5. Forsett med alle



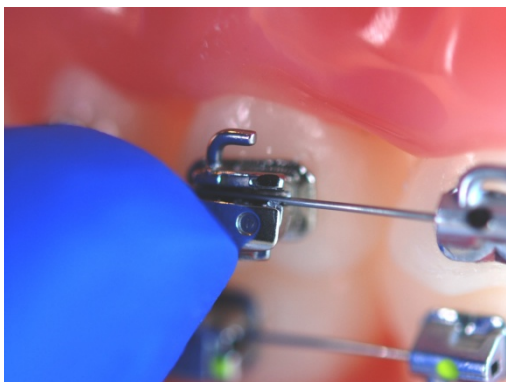
6. Ta ut buen



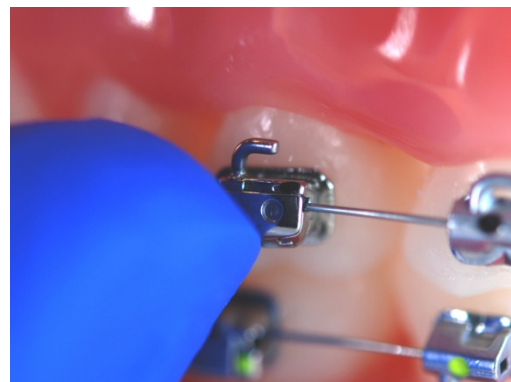
7. Lukk bracket med fingerneflen



8. Lukket bracket



9. Det samme med 6erne



10. Lukket 6er